



gebo fittings
PLATINUM

PLATINUM LINE

OUR AIM IS TO MAKE THE GOOD THINGS EVEN BETTER

Thus we decided to transfer the high quality aspects of our cast iron compression fittings also onto our fitting range: After machining process all threads are covered with an additional galvanizing with the following effects:

- Highest corrosion protection
- No need of further conservation with oil
- Highest level of hygienic requirements

PRODUCT STANDARDS AND APPLICATIONS:

GEBO Threaded Malleable Cast Iron Fittings are in compliance with Standard DIN EN 10242, design symbol A, corresponding to the materials and thread combination.

GEBO Threaded Malleable Cast Iron Fittings are in accordance with the requirements of above Standard, suitable for compressed air, water, flammable gases, hydrocarbons and other media under the mentioned pressure and temperature limits.

Application:

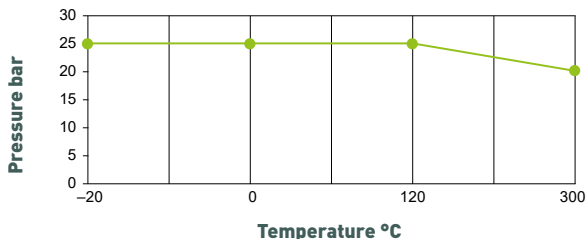
Working minimal temperature: -20 °C, 25 bar

Working pressure for temperature range from -20 °C to 120 °C: 25 bar

Working pressure for temperature range from 120 °C to 300 °C: 20-25 bar

TECHNICAL DATA:

Pressure to temperature ratio



MATERIAL COMPOSITION:

GEBO threaded fittings are made in malleable cast iron and with design symbol A in compliance with standard DIN EN 10242:1994, quality grade known as EN-GJMB-350-10.

This means that the following results are obtained in mechanical tests on samples with a diameter of 12 mm:

- Tensile strength (minimum value): 350 N/mm² (35 kg/mm²)
- Yield strength 0.2% (minimum value): 200 N/mm² (20 kg/mm²)
- Elongation (minimum value): 10%
- Brinell hardness: max. 150 HB

In order to ensure that there are no defects in material that could result in leakage, each **GEBO** fitting is leak tightness tested in accordance with requirements of DIN EN 10242.

PLATINUM LINE



ZINC COATING

GEBO threaded fittings are hot-dip galvanized by zinc plating, under Standard DIN EN 10242.

The zinc coating is over 500 gr/m², that means minimal average thickness of 70 micron.

This thickness of the zinc coating and the good adherence to the base surface assure a perfect and long-lasting anti-corrosive protection.



FURTHER CORROSION PROTECTION

After machining process of threading all **GEBO** Fittings are covered with an additional galvanizing. Thus all fittings are free from oils or other conservation liquids.



THREAD CONNECTION:

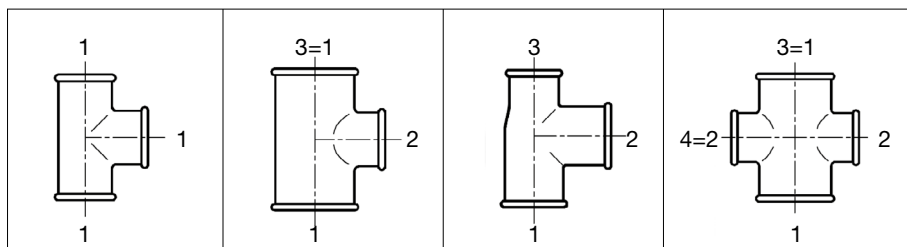
Jointing threads: GEBO threaded fittings with design symbol A are produced with taper external thread (R) and parallel internal thread (Rp) in accordance with Standard ISO 7/1 (DIN EN 10226-1).

Fastening threads: GEBO threaded fittings with design symbol A are produced with parallel external and internal threads (G) in accordance with Standard DIN EN ISO 228/1.

DN	6	8	10	15	20	25	32	40	50	65	80	100
INCH	1/8	1/4	3/8	1/2	3/4	1	1 1/4	1 1/2	2	2 1/2	3	4

THREAD ALIGNMENT:

The mechanization process of **GEBO** fittings prevents the alignment of threads from any variations over 0.5° (30'), as indicated in the Standard.



PLATINUM LINE



1 LONG SWEEP BEND 90° M/F		ISO G4
Sizes	Code galvanized	Code black
1/4"	1-2V	1-2S
3/8"	1-3V	1-3S
1/2"	1-4V	1-4S
3/4"	1-5V	1-5S
1"	1-6V	1-6S
1 1/4"	1-7V	1-7S
1 1/2"	1-8V	1-8S
2"	1-9V	1-9S
2 1/2"	1-10V	1-10S
3"	1-11V	1-11S
4"	1-12V	1-12S



1A SHORT BEND 90° M/F		ISO D4
Sizes	Code galvanized	Code black
3/8"	1A-3V	1A-3S
1/2"	1A-4V	1A-4S
3/4"	1A-5V	1A-5S
1"	1A-6V	1A-6S
1 1/4"	1A-7V	1A-7S
1 1/2"	1A-8V	1A-8S
2"	1A-9V	1A-9S
2 1/2"	1A-10V	1A-10S



2 LONG SWEEP BEND 90° F/F		ISO G1
Sizes	Code galvanized	Code black
1/4"	2-2V	2-2S
3/8"	2-3V	2-3S
1/2"	2-4V	2-4S
3/4"	2-5V	2-5S
1"	2-6V	2-6S
1 1/4"	2-7V	2-7S
1 1/2"	2-8V	2-8S
2"	2-9V	2-9S
2 1/2"	2-10V	2-10S
3"	2-11V	2-11S
4"	2-12V	2-12S



2A SHORT BEND 90° F/F		ISO D1
Sizes	Code galvanized	Code black
1/2"	2A-4V	2A-4S
3/4"	2A-5V	2A-5S
1"	2A-6V	2A-6S
1 1/4"	2A-7V	2A-7S
1 1/2"	2A-8V	2A-8S
2"	2A-9V	2A-9S

PLATINUM LINE



3 LONG SWEEP BEND 90° M/M ISO G8

Sizes	Code galvanized	Code black
1/4"	3-2V	3-2S
3/8"	3-3V	3-3S
1/2"	3-4V	3-4S
3/4"	3-5V	3-5S
1"	3-6V	3-6S
1 1/4"	3-7V	3-7S
1 1/2"	3-8V	3-8S
2"	3-9V	3-9S
2 1/2"	3-10V	3-10S
3"	3-11V	3-11S
4"	3-12V	3-12S



40 LONG SWEEP BEND 45° M/F ISO G4/45°

Sizes	Code galvanized	Code black
1/4"	40-2V	40-2S
3/8"	40-3V	40-3S
1/2"	40-4V	40-4S
3/4"	40-5V	40-5S
1"	40-6V	40-6S
1 1/4"	40-7V	40-7S
1 1/2"	40-8V	40-8S
2"	40-9V	40-9S
2 1/2"	40-10V	40-10S
3"	40-11V	40-11S
4"	40-12V	40-12S
6"	40-14V	



41 LONG SWEEP BEND 45° F/F ISO G1/45°

Sizes	Code galvanized	Code black
3/8"	41-3V	41-3S
1/2"	41-4V	41-4S
3/4"	41-5V	41-5S
1"	41-6V	41-6S
1 1/4"	41-7V	41-7S
1 1/2"	41-8V	41-8S
2"	41-9V	41-9S
2 1/2"	41-10V	41-10S
3"	41-11V	41-11S
4"	41-12V	41-12S



60 RETURN BEND F/F

Sizes	Code galvanized	Code black
3/4"	60-5V	60-5S
1"	60-6V	60-6S
1 1/2"	60-8V	60-8S
2"	60-9V	60-9S



PLATINUM LINE



85 CROSSOVER F/F

Sizes	Code galvanized	Code black
1/2"	85-4V	85-4S
3/4"	85-5V	85-5S
1"	85-6V	85-6S
1 1/4"	85-7V	85-7S
1 1/2"	85-8V	85-8S
2"	85-9V	85-9S



90 ELBOW 90° F/F, EQUAL ISO A1

Sizes	Code galvanized	Code black
1/4"	90-2V	90-2S
3/8"	90-3V	90-3S
1/2"	90-4V	90-4S
3/4"	90-5V	90-5S
1"	90-6V	90-6S
1 1/4"	90-7V	90-7S
1 1/2"	90-8V	90-8S
2"	90-9V	90-9S
2 1/2"	90-10V	90-10S
3"	90-11V	90-11S
4"	90-12V	90-12S
5"	90-13V	90-13S
6"	90-14V	90-14S



90 ELBOW 90° F/F, REDUCING ISO A1

Sizes [1x2]	Code galvanized	Code black
3/8" x 1/4"	90-16V	90-16S
1/2" x 1/4"	90-18V	90-18S
1/2" x 3/8"	90-19V	90-19S
3/4" x 3/8"	90-21V	90-21S
3/4" x 1/2"	90-22V	90-22S
1" x 1/2"	90-25V	90-25S
1" x 3/4"	90-26V	90-26S
1 1/4" x 1/2"	90-27V	90-27S
1 1/4" x 3/4"	90-28V	90-28S
1 1/4" x 1"	90-29V	90-29S
1 1/2" x 1/2"	90-30V	90-30S
1 1/2" x 3/4"	90-31V	90-31S
1 1/2" x 1"	90-32V	90-32S
1 1/2" x 1 1/4"	90-33V	90-33S
2" x 1/2"	90-34V	90-34S
2" x 3/4"	90-35V	90-35S
2" x 1"	90-36V	90-36S
2" x 1 1/4"	90-37V	90-37S
2" x 1 1/2"	90-38V	90-38S
2 1/2" x 1"	90-41V	90-41S
2 1/2" x 1 1/2"	90-43V	90-43S
2 1/2" x 2"	90-44V	90-44S
3" x 1 1/2"	90-49V	90-49S
3" x 2"	90-50V	90-50S
3" x 2 1/2"	90-51V	90-51S
4" x 2 1/2"	90-52V	90-52S
4" x 3"	90-53V	90-53S

PLATINUM LINE



92 ELBOW 90° M/F, EQUAL AND REDUCING ISO A4

Sizes [1x2]	Code galvanized	Code black
1/4"	92-2V	92-2S
3/8"	92-3V	92-3S
1/2"	92-4V	92-4S
3/4"	92-5V	92-5S
1"	92-6V	92-6S
1 1/4"	92-7V	92-7S
1 1/2"	92-8V	92-8S
2"	92-9V	92-9S
2 1/2"	92-10V	92-10S
3"	92-11V	92-11S
4"	92-12V	92-12S
1/2" x 3/8"	92-19V	92-19S
3/4" x 3/8"	92-21V	92-21S
3/4" x 1/2"	92-22V	92-22S
1" x 3/4"	92-26V	92-26S
1 1/4" x 1"	92-29V	92-29S
1 1/2" x 1"	92-32V	92-32S
1 1/2" x 1 1/4"	92-33V	92-33S



94 ELBOW 90° M/M

Sizes	Code galvanized	Code black
3/8"	94-3V	94-3S
1/2"	94-4V	94-4S
3/4"	94-5V	94-5S
1"	94-6V	94-6S
1 1/4"	94-7V	94-7S
1 1/2"	94-8V	94-8S
2"	94-9V	94-9S



95 UNION ELBOW 90°, FLAT SEAT, F/F ISO UA1

Sizes	Code galvanized	Code black
3/8"	95-3V	95-3S
1/2"	95-4V	95-4S
3/4"	95-5V	95-5S
1"	95-6V	95-6S
1 1/4"	95-7V	95-7S
1 1/2"	95-8V	95-8S
2"	95-9V	95-9S



96 UNION ELBOW 90°, TAPER SEAT, F/F ISO UA11

Sizes	Code galvanized	Code black
3/8"	96-3V	96-3S
1/2"	96-4V	96-4S
3/4"	96-5V	96-5S
1"	96-6V	96-6S
1 1/4"	96-7V	96-7S
1 1/2"	96-8V	96-8S
2"	96-9V	96-9S
2 1/2"	96-10V	96-10S
3"	96-11V	96-11S



PLATINUM LINE



97 UNION ELBOW 90°, FLAT SEAT, M/F ISO UA2

Sizes	Code galvanized	Code black
3/8"	97-3V	97-3S
1/2"	97-4V	97-4S
3/4"	97-5V	97-5S
1"	97-6V	97-6S
1 1/4"	97-7V	97-7S
1 1/2"	97-8V	97-8S
2"	97-9V	97-9S



98 UNION ELBOW 90°, TAPER SEAT, M/F ISO UA12

Sizes	Code galvanized	Code black
3/8"	98-3V	98-3S
1/2"	98-4V	98-4S
3/4"	98-5V	98-5S
1"	98-6V	98-6S
1 1/4"	98-7V	98-7S
1 1/2"	98-8V	98-8S
2"	98-9V	98-9S
2 1/2"	98-10V	98-10S
3"	98-11V	98-11S



120 ELBOW 45° F/F ISO A1/45°

Sizes	Code galvanized	Code black
1/4"	120-2V	120-2S
3/8"	120-3V	120-3S
1/2"	120-4V	120-4S
3/4"	120-5V	120-5S
1"	120-6V	120-6S
1 1/4"	120-7V	120-7S
1 1/2"	120-8V	120-8S
2"	120-9V	120-9S
2 1/2"	120-10V	120-10S
3"	120-11V	120-11S
4"	120-12V	120-12S



121 ELBOW 45° M/F ISO A4/45°

Sizes	Code galvanized	Code black
3/8"	121-3V	121-3S
1/2"	121-4V	121-4S
3/4"	121-5V	121-5S
1"	121-6V	121-6S
1 1/4"	121-7V	121-7S
1 1/2"	121-8V	121-8S
2"	121-9V	121-9S
2 1/2"	121-10V	121-10S
3"	121-11V	121-11S

PLATINUM LINE



130 TEE 90°, F/F/F, EQUAL ISO B1

Sizes	Code galvanized	Code black
1/4"	130-2V	130-2S
3/8"	130-3V	130-3S
1/2"	130-4V	130-4S
3/4"	130-5V	130-5S
1"	130-6V	130-6S
1 1/4"	130-7V	130-7S
1 1/2"	130-8V	130-8S
2"	130-9V	130-9S
2 1/2"	130-10V	130-10S
3"	130-11V	130-11S
4"	130-12V	130-12S
5"	130-13V	130-13S
6"	130-14V	130-14S



130 TEE 90° F/F/F, REDUCING ISO B1

Sizes [1x2x3]	Code galvanized	Code black
3/8" x 1/4" x 3/8"	130-15V	130-15S
3/8" x 1/2" x 3/8"	130-115V	130-115S
1/2" x 1/4" x 1/2"	130-17V	130-17S
1/2" x 3/8" x 3/8"	130-71V	130-71S
1/2" x 3/8" x 1/2"	130-19V	130-19S
1/2" x 1/2" x 3/8"	130-72V	130-72S
1/2" x 3/4" x 1/2"	130-20V	130-20S
1/2" x 1" x 1/2"	130-16V	130-16S
3/4" x 1/4" x 3/4"	130-116V	130-116S
3/4" x 3/8" x 3/4"	130-21V	130-21S
3/4" x 1/2" x 1/2"	130-61V	130-61S
3/4" x 1/2" x 3/4"	130-22V	130-22S
3/4" x 3/4" x 3/8"	130-64V	130-64S
3/4" x 3/4" x 1/2"	130-62V	130-62S
3/4" x 1" x 1/2"	130-66V	130-66S
3/4" x 1" x 3/4"	130-70V	130-70S
1" x 3/8" x 1"	130-18V	130-18S
1" x 1/2" x 1/2"	130-67V	130-67S
1" x 1/2" x 3/4"	130-68V	130-68S
1" x 1/2" x 1"	130-25V	130-25S
1" x 3/4" x 1/2"	130-69V	130-69S
1" x 3/4" x 3/4"	130-73V	130-73S
1" x 3/4" x 1"	130-26V	130-26S
1" x 1" x 3/8"	130-74V	130-74S
1" x 1" x 1/2"	130-75V	130-75S
1" x 1" x 3/4"	130-65V	130-65S
1" x 1 1/4" x 1"	130-23V	130-23S
1" x 1 1/2" x 1"	130-117V	130-117S
1 1/4" x 3/8" x 1 1/4"	130-24V	130-24S
1 1/4" x 1/2" x 1"	130-77V	130-77S
1 1/4" x 1/2" x 1 1/4"	130-27V	130-27S
1 1/4" x 3/4" x 3/4"	130-78V	130-78S
1 1/4" x 3/4" x 1"	130-79V	130-79S
1 1/4" x 3/4" x 1 1/4"	130-28V	130-28S
1 1/4" x 1" x 3/4"	130-80V	130-80S
1 1/4" x 1" x 1"	130-81V	130-81S
1 1/4" x 1" x 1 1/4"	130-29V	130-29S
1 1/4" x 1 1/4" x 1/2"	130-82V	130-82S
1 1/4" x 1 1/4" x 3/4"	130-83V	130-83S
1 1/4" x 1 1/4" x 1"	130-84V	130-84S
1 1/4" x 1 1/2" x 1 1/4"	130-40V	130-40S
1 1/4" x 2" x 1 1/4"	130-41V	130-41S
1 1/2" x 1/2" x 1 1/4"	130-86V	130-86S
1 1/2" x 1/2" x 1 1/2"	130-30V	130-30S
1 1/2" x 3/4" x 1 1/4"	130-87V	130-87S
1 1/2" x 3/4" x 1 1/2"	130-31V	130-31S



PLATINUM LINE



310 TEE 90° F/F/F, REDUCING ISO B1

Sizes [1x2x3]	Code galvanized	Code black
1 1/2" x 1" x 1"	130-88V	130-88S
1 1/2" x 1" x 1 1/4"	130-89V	130-89S
1 1/2" x 1" x 1 1/2"	130-32V	130-32S
1 1/2" x 1 1/4" x 1"	130-90V	130-90S
1 1/2" x 1 1/4" x 1 1/4"	130-91V	130-91S
1 1/2" x 1 1/4" x 1 1/2"	130-33V	130-33S
1 1/2" x 1 1/2" x 1/2"	130-92V	130-92S
1 1/2" x 1 1/2" x 3/4"	130-93V	130-93S
1 1/2" x 1 1/2" x 1"	130-94V	130-94S
1 1/2" x 1 1/2" x 1 1/4"	130-95V	130-95S
1 1/2" x 2" x 1 1/4"	130-96V	130-96S
1 1/2" x 2" x 1 1/2"	130-39V	130-39S
2" x 1/2" x 1 1/2"	130-97V	130-97S
2" x 1/2" x 2"	130-34V	130-34S
2" x 3/4" x 1 1/2"	130-98V	130-98S
2" x 3/4" x 2"	130-35V	130-35S
2" x 1" x 1 1/2"	130-99V	130-99S
2" x 1" x 2"	130-36V	130-36S
2" x 1 1/4" x 1 1/4"	130-100V	130-100S
2" x 1 1/4" x 1 1/2"	130-101V	130-101S
2" x 1 1/4" x 2"	130-37V	130-37S
2" x 1 1/2" x 1 1/2"	130-102V	130-102S
2" x 1 1/2" x 2"	130-38V	130-38S
2" x 2" x 1/2"	130-103V	130-103S
2" x 2" x 3/4"	130-104V	130-104S
2" x 2" x 1"	130-105V	130-105S
2" x 2" x 1 1/2"	130-107V	130-107S
2 1/2" x 1/2" x 2 1/2"	130-44V	130-44S
2 1/2" x 3/4" x 2 1/2"	130-45V	130-45S
2 1/2" x 1" x 2 1/2"	130-42V	130-42S
2 1/2" x 1 1/4" x 2 1/2"	130-46V	130-46S
2 1/2" x 1 1/2" x 2 1/2"	130-47V	130-47S
2 1/2" x 2" x 2"	130-108V	130-108S
2 1/2" x 2" x 2 1/2"	130-48V	130-48S
3" x 1" x 3"	130-51V	130-51S
3" x 1 1/4" x 3"	130-52V	130-52S
3" x 1 1/2" x 3"	130-53V	130-53S
3" x 2" x 3"	130-50V	130-50S
3" x 2 1/2" x 3"	130-54V	130-54S
4" x 1 1/4" x 4"	130-118V	130-118S
4" x 1 1/2" x 4"	130-119V	130-119S
4" x 2" x 4"	130-57V	130-57S
4" x 2 1/2" x 4"	130-58V	130-58S
4" x 3" x 4"	130-59V	130-59S



311 PITCHER TEE, EQUAL, F/F/F ISO E1

Sizes	Code galvanized	Code black
1/2"	131-4V	131-4S
3/4"	131-5V	131-5S
1"	131-6V	131-6S
1 1/4"	131-7V	131-7S
1 1/2"	131-8V	131-8S
2"	131-9V	131-9S



312 TWIN ELBOW, EQUAL, F/F/F ISO E2

Sizes	Code galvanized	Code black
1/2"	132-4V	132-4S
3/4"	132-5V	132-5S
1"	132-6V	132-6S
1 1/4"	132-7V	132-7S
1 1/2"	132-8V	132-8S
2"	132-9V	132-9S

PLATINUM LINE



133 TEE EQUAL F/M/F

Sizes	Code galvanized	Code black
3/8"	133-3V	133-3S
1/2"	133-4V	133-4S
3/4"	133-5V	133-5S
1"	133-6V	133-6S



134 TEE EQUAL M/F/F

Sizes	Code galvanized	Code black
1/2"	134-4V	134-4S
3/4"	134-5V	134-5S
1"	134-6V	134-6S
1 1/4"	134-7V	134-7S
1 1/2"	134-8V	134-8S
2"	134-9V	134-9S



135 TEE EQUAL M/M/M

Sizes	Code galvanized	Code black
1/2"	135-4V	135-4S
3/4"	135-5V	135-5S
1"	135-6V	135-6S



165 TEE LATERAL Y BRANCH 45° F/F/F

Sizes	Code galvanized	Code black
1/2"	165-4V	165-4S
3/4"	165-5V	165-5S
1"	165-6V	165-6S
1 1/4"	165-7V	165-7S
1 1/2"	165-8V	165-8S
2"	165-9V	165-9S



180 CROSS EQUAL F/F/F/F

ISO C1

Sizes	Code galvanized	Code black
1/4"	180-2V	180-2S
3/8"	180-3V	180-3S
1/2"	180-4V	180-4S
3/4"	180-5V	180-5S
1"	180-6V	180-6S
1 1/4"	180-7V	180-7S
1 1/2"	180-8V	180-8S
2"	180-9V	180-9S
2 1/2"	180-10V	180-10S
3"	180-11V	180-11S
4"	180-12V	180-12S



180 CROSS REDUCING F/F/F/F

ISO C1

Sizes [1x2]	Code galvanized	Code black
3/4" x 1/2"	180-22V	180-22S
1" x 1/2"	180-25V	180-25S



PLATINUM LINE



2



1

220 Y-PIECE F/F/F

Sizes	Code galvanized	Code black
3/8"	220-3V	220-3S
1/2"	220-4V	220-4S
3/4"	220-5V	220-5S
1"	220-6V	220-6S

221 SIDE OUTLET ELBOW F/F/F ISO Za1

Sizes	Code galvanized	Code black
1/2"	221-4V	221-4S
3/4"	221-5V	221-5S
1"	221-6V	221-6S
1 1/4"	221-7V	221-7S
1 1/2"	221-8V	221-8S
2"	221-9V	221-9S

223 SIDE OUTLET TEE F/F/F/F ISO Za2

Sizes	Code galvanized	Code black
1/2"	223-4V	223-4S
3/4"	223-5V	223-5S
1"	223-6V	223-6S
1 1/4"	223-7V	223-7S

240 REDUCING SOCKET F/F ISO M2

Sizes [1x2]	Code galvanized	Code black
3/8" x 1/4"	240-16V	240-16S
1/2" x 1/4"	240-18V	240-18S
1/2" x 3/8"	240-19V	240-19S
3/4" x 3/8"	240-21V	240-21S
3/4" x 1/2"	240-22V	240-22S
1" x 3/8"	240-24V	240-24S
1" x 1/2"	240-25V	240-25S
1" x 3/4"	240-26V	240-26S
1 1/4" x 1/2"	240-27V	240-27S
1 1/4" x 3/4"	240-28V	240-28S
1 1/4" x 1"	240-29V	240-29S
1 1/2" x 1/2"	240-30V	240-30S
1 1/2" x 3/4"	240-31V	240-31S
1 1/2" x 1"	240-32V	240-32S
1 1/2" x 1 1/4"	240-33V	240-33S
2" x 1/2"	240-34V	240-34S
2" x 3/4"	240-35V	240-35S
2" x 1"	240-36V	240-36S
2" x 1 1/4"	240-37V	240-37S
2" x 1 1/2"	240-38V	240-38S
2 1/2" x 1/2"	240-39V	240-39S
2 1/2" x 3/4"	240-40V	240-40S
2 1/2" x 1"	240-41V	240-41S
2 1/2" x 1 1/4"	240-42V	240-42S
2 1/2" x 1 1/2"	240-43V	240-43S
2 1/2" x 2"	240-44V	240-44S
3" x 1"	240-47V	240-47S
3" x 1 1/4"	240-48V	240-48S
3" x 1 1/2"	240-49V	240-49S
3" x 2"	240-50V	240-50S
3" x 2 1/2"	240-51V	240-51S
4" x 1 1/2"	240-56V	240-56S
4" x 2"	240-57V	240-57S
4" x 2 1/2"	240-58V	240-58S
4" x 3"	240-59V	240-59S

PLATINUM LINE



241 REDUCING BUSH, M/F ISO N4

Sizes [1x2]	Code galvanized	Code black
3/8" x 1/4"	241-16V	241-16S
1/2" x 1/4"	241-18V	241-18S
1/2" x 3/8"	241-19V	241-19S
3/4" x 1/4"	241-20V	241-20S
3/4" x 3/8"	241-21V	241-21S
3/4" x 1/2"	241-22V	241-22S
1" x 3/8"	241-24V	241-24S
1" x 1/2"	241-25V	241-25S
1" x 3/4"	241-26V	241-26S
1 1/4" x 1/2"	241-27V	241-27S
1 1/4" x 3/4"	241-28V	241-28S
1 1/4" x 1"	241-29V	241-29S
1 1/2" x 1/2"	241-30V	241-30S
1 1/2" x 3/4"	241-31V	241-31S
1 1/2" x 1"	241-32V	241-32S
1 1/2" x 1 1/4"	241-33V	241-33S
2" x 1/2"	241-34V	241-34S
2" x 3/4"	241-35V	241-35S
2" x 1"	241-36V	241-36S
2" x 1 1/4"	241-37V	241-37S
2" x 1 1/2"	241-38V	241-38S
2 1/2" x 1/2"	241-39V	241-39S
2 1/2" x 3/4"	241-40V	241-40S
2 1/2" x 1"	241-41V	241-41S
2 1/2" x 1 1/4"	241-42V	241-42S
2 1/2" x 1 1/2"	241-43V	241-43S
2 1/2" x 2"	241-44V	241-44S
3" x 3/4"	241-46V	241-46S
3" x 1"	241-47V	241-47S
3" x 1 1/4"	241-48V	241-48S
3" x 1 1/2"	241-49V	241-49S
3" x 2"	241-50V	241-50S
3" x 2 1/2"	241-51V	241-51S
4" x 1"	241-54V	241-54S
4" x 1 1/4"	241-55V	241-55S
4" x 1 1/2"	241-56V	241-56S
4" x 2"	241-57V	241-57S
4" x 2 1/2"	241-58V	241-58S
4" x 3"	241-59V	241-59S
5" x 4"	241-60V	241-60S
6" x 3"	241-61V	241-61S
6" x 4"	241-62V	241-62S
6" x 5"	241-63V	241-63S



1

2

245 HEXAGON NIPPLE REDUCING, M/M ISO N8

Sizes [1x2]	Code galvanized	Code black
3/8" x 1/4"	245-16V	245-16S
1/2" x 1/4"	245-18V	245-18S
1/2" x 3/8"	245-19V	245-19S
3/4" x 3/8"	245-21V	245-21S
3/4" x 1/2"	245-22V	245-22S
1" x 1/2"	245-25V	245-25S
1" x 3/4"	245-26V	245-26S
1 1/4" x 1/2"	245-27V	245-27S
1 1/4" x 3/4"	245-28V	245-28S
1 1/4" x 1"	245-29V	245-29S
1 1/2" x 1/2"	245-30V	245-30S
1 1/2" x 3/4"	245-31V	245-31S
1 1/2" x 1"	245-32V	245-32S
1 1/2" x 1 1/4"	245-33V	245-33S
2" x 1/2"	245-34V	245-34S
2" x 3/4"	245-35V	245-35S



1

2

PLATINUM LINE



1

2



1



245 HEXAGON NIPPLE REDUCING, M/M ISO N8

Sizes [1x2]	Code galvanized	Code black
2" x 1"	245-36V	245-36S
2" x 1 1/4"	245-37V	245-37S
2" x 1 1/2"	245-38V	245-38S
2 1/2" x 1"	245-41V	245-41S
2 1/2" x 1 1/4"	245-42V	245-42S
2 1/2" x 1 1/2"	245-43V	245-43S
2 1/2" x 2"	245-44V	245-44S
3" x 1 1/2"	245-49V	245-49S
3" x 2"	245-50V	245-50S
3" x 2 1/2"	245-51V	245-51S
4" x 2"	245-57V	245-57S
4" x 2 1/2"	245-58V	245-58S
4" x 3"	245-59V	245-59S

246 REDUCING SOCKETS F/M ISO M4

Sizes [1x2]	Code galvanized	Code black
3/8" x 1/4"	246-16V	246-16S
1/2" x 1/4"	246-18V	246-18S
1/2" x 3/8"	246-19V	246-19S
3/4" x 3/8"	246-21V	246-21S
3/4" x 1/2"	246-22V	246-22S
1" x 1/2"	246-25V	246-25S
1" x 3/4"	246-26V	246-26S
1 1/4" x 1/2"	246-27V	246-27S
1 1/4" x 3/4"	246-28V	246-28S
1 1/4" x 1"	246-29V	246-29S
1 1/2" x 3/4"	246-31V	246-31S
1 1/2" x 1"	246-32V	246-32S
1 1/2" x 1 1/4"	246-33V	246-33S
2" x 1/2"	246-34V	246-34S
2" x 3/4"	246-35V	246-35S
2" x 1"	246-36V	246-36S
2" x 1 1/4"	246-37V	246-37S
2" x 1 1/2"	246-38V	246-38S
2 1/2" x 2"	246-44V	246-44S
3" x 2"	246-50V	246-50S
3" x 2 1/2"	246-51V	246-51S

270 SOCKETS EQUAL, F/F ISO M2

Sizes	Code galvanized	Code black
1/4"	270-2V	270-2S
3/8"	270-3V	270-3S
1/2"	270-4V	270-4S
3/4"	270-5V	270-5S
1"	270-6V	270-6S
1 1/4"	270-7V	270-7S
1 1/2"	270-8V	270-8S
2"	270-9V	270-9S
2 1/2"	270-10V	270-10S
3"	270-11V	270-11S
4"	270-12V	270-12S

271 SOCKETS, F/F, RIGHT AND LEFT HAND THREAD ISO M2 R-L

Sizes	Code galvanized	Code black
1/2"	271-4V	271-4S
3/4"	271-5V	271-5S
1"	271-6V	271-6S
1 1/4"	271-7V	271-7S
1 1/2"	271-8V	271-8S
2"	271-9V	271-9S

PLATINUM LINE



280 HEXAGON NIPPLES, M/M ISO N8

Sizes	Code galvanized	Code black
1/4"	280-2V	280-2S
3/8"	280-3V	280-3S
1/2"	280-4V	280-4S
3/4"	280-5V	280-5S
1"	280-6V	280-6S
1 1/4"	280-7V	280-7S
1 1/2"	280-8V	280-8S
2"	280-9V	280-9S
2 1/2"	280-10V	280-10S
3"	280-11V	280-11S
4"	280-12V	280-12S
5"	280-13V	280-13S
6"	280-14V	280-14S



281 HEXAGON NIPPLES M/M, RIGHT AND LEFT HAND THREAD ISO N8 R-L

Sizes	Code galvanized	Code black
3/8"	281-3V	281-3S
1/2"	281-4V	281-4S
3/4"	281-5V	281-5S
1"	281-6V	281-6S
1 1/4"	281-7V	281-7S
1 1/2"	281-8V	281-8S
2"	281-9V	281-9S



290 PLUGS, BEADED ISO T9

Sizes	Code galvanized	Code black
1/4"	290-2V	290-2S
3/8"	290-3V	290-3S
1/2"	290-4V	290-4S
3/4"	290-5V	290-5S
1"	290-6V	290-6S
1 1/4"	290-7V	290-7S
1 1/2"	290-8V	290-8S
2"	290-9V	290-9S
2 1/2"	290-10V	290-10S
3"	290-11V	290-11S
4"	290-12V	290-12S



291 PLUGS, PLAIN ISO T8

Sizes	Code galvanized	Code black
1/4"	291-2V	291-3S
3/8"	291-3V	291-4S
1/2"	291-4V	291-4S
3/4"	291-5V	291-5S
1"	291-6V	291-6S
1 1/4"	291-7V	291-7S
1 1/2"	291-8V	291-8S
2"	291-9V	291-9S
2 1/2"	291-10V	291-10S
3"	291-11V	291-11S
4"	291-12V	291-12S



PLATINUM LINE



300 MULTANGULAR CAP ISO T1**

Sizes	Code galvanized	Code black
1/4"	300-2V	300-2S
3/8"	300-3V	300-3S
1/2"	300-4V	300-4S
3/4"	300-5V	300-5S
1"	300-6V	300-6S
1 1/4"	300-7V	300-7S
1 1/2"	300-8V	300-8S
2"	300-9V	300-9S
2 1/2"	300-10V	300-10S
3"	300-11V	300-11S
4"	300-12V	300-12S

** Hexagonal cap from size 1/4" to 3/4"; octagonal cap from size 1" to 4"



301 ROUND CAP ISO T1

Sizes	Code galvanized	Code black
1/4"	301-2V	301-2S
3/8"	301-3V	301-3S
1/2"	301-4V	301-4S
3/4"	301-5V	301-5S
1"	301-6V	301-6S
1 1/4"	301-7V	301-7S
1 1/2"	301-8V	301-8S
2"	301-9V	301-9S
2 1/2"	301-10V	301-10S
3"	301-11V	301-11S
4"	301-12V	301-12S



310 BACKNUTS ISO P4

Sizes	Code galvanized	Code black
1/4"	310-2V	310-2S
3/8"	310-3V	310-3S
1/2"	310-4V	310-4S
3/4"	310-5V	310-5S
1"	310-6V	310-6S
1 1/4"	310-7V	310-7S
1 1/2"	310-8V	310-8S
2"	310-9V	310-9S
2 1/2"	310-10V	310-10S
3"	310-11V	310-11S
4"	310-12V	310-12S



321 FLANGE, WITHOUT BOLT HOLES

Sizes	Code galvanized	Code black
1/2"	321-4V	321-4S
3/4"	321-5V	321-5S
1"	321-6V	321-6S
1 1/4"	321-7V	321-7S
1 1/2"	321-8V	321-8S
2"	321-9V	321-9S

PLATINUM LINE



329 FLANGES WITH 4 BOLT HOLES

Sizes	Code galvanized	Code black
1/2"	329-4V	329-4S
3/4"	329-5V	329-5S
1"	329-6V	329-6S
1 1/4"	329-7V	329-7S
1 1/2"	329-8V	329-8S
2"	329-9V	329-9S
2 1/2"	329-10V	329-10S
3"	329-11V	329-11S

Note: These flanged are not according to standards (no din). Not suitable for use in media-bearing pipelines.



330 UNIONS FLAT SEAT, F/F ISO U1

Sizes	Code galvanized	Code black
3/8"	330-3V	330-3S
1/2"	330-4V	330-4S
3/4"	330-5V	330-5S
1"	330-6V	330-6S
1 1/4"	330-7V	330-7S
1 1/2"	330-8V	330-8S
2"	330-9V	330-9S
2 1/2"	330-10V	330-10S
3"	330-11V	330-11S
4"	330-12V	330-12S



331 UNIONS FLAT SEAT, M/F ISO U2

Sizes	Code galvanized	Code black
3/8"	331-3V	331-3S
1/2"	331-4V	331-4S
3/4"	331-5V	331-5S
1"	331-6V	331-6S
1 1/4"	331-7V	331-7S
1 1/2"	331-8V	331-8S
2"	331-9V	331-9S
2 1/2"	331-10V	331-10S
3"	331-11V	331-11S
4"	331-12V	331-12S



340 UNIONS TAPER SEAT, F/F ISO U11

Sizes	Code galvanized	Code black
3/8"	340-3V	340-3S
1/2"	340-4V	340-4S
3/4"	340-5V	340-5S
1"	340-6V	340-6S
1 1/4"	340-7V	340-7S
1 1/2"	340-8V	340-8S
2"	340-9V	340-9S
2 1/2"	340-10V	340-10S
3"	340-11V	340-11S
4"	340-12V	340-12S



PLATINUM LINE



341 UNIONS TAPER SEAT, M/F ISO U12

Sizes	Code galvanized	Code black
3/8"	341-3V	341-3S
1/2"	341-4V	341-4S
3/4"	341-5V	341-5S
1"	341-6V	341-6S
1 1/4"	341-7V	341-7S
1 1/2"	341-8V	341-8S
2"	341-9V	341-9S
2 1/2"	341-10V	341-10S
3"	341-11V	341-11S
4"	341-12V	341-12S



351 UNION SET (INCLUDING EPDM SEALING)*

Art. 372	Art. 374	Code galvanized	Code black
1"	G 1 1/2"		351-6S
1 1/4"	G 1 1/2"		351-7S

[2 pcs x code 372 + 2 pcs x code 374 + 2 gaskets]
*not applicable for drinking water and gas



370 UNION BUSHES FLAT SEAT

Sizes		Code galvanized	Code black
Rp	G		
3/4"	1 1/4"	370-5V	370-5S
1"	1 1/2"	370-6V	370-6S
1 1/4"	2"	370-7V	370-7S
1 1/2"	2 1/4"	370-8V	370-8S
2"	2 3/4"	370-9V	370-9S
2 1/2"	3 1/2"	370-10V	370-10S

Rp = Parallel internal thread
G = Parallel external and internal threads



371 UNION END FLAT SEAT

Sizes		Code galvanized	Code black
R	D for G		
3/4"	1 1/4"	371-5V	371-5S
1"	1 1/2"	371-6V	371-6S
1 1/4"	2"	371-7V	371-7S
1 1/2"	2 1/4"	371-8V	371-8S
2"	2 3/4"	371-9V	371-9S
2 1/2"	3 1/2"	371-10V	371-10S

R = Taper external thread



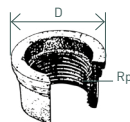
PLATINUM LINE



372 UNION END FLAT SEAT

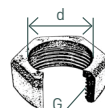
Sizes		Code galvanized	Code black
Rp	D for G		
3/8"	3/4"	372-3V	372-3S
1/2"	1"	372-4V	372-4S
3/4"	1 1/4"	372-5V	372-5S
1"	1 1/2"	372-6V	372-6S
1 1/4"	2"	372-7V	372-7S
1 1/2"	2 1/4"	372-8V	372-8S
2"	2 3/4"	372-9V	372-9S
2 1/2"	3 1/2"	372-10V	372-10S

Rp = Parallel internal thread



374 UNION NUT

d to R/Rp	G	Code galvanized	Code black
3/8"	7/8"	374-3V	374-3S
1/2"	1 1/8"	374-4V	374-3S
3/4"	1 1/4"	374-5V	374-3S
1"	1 1/2"	374-6V	374-3S
1 1/4"	2"	374-7V	374-3S
1 1/2"	2 1/4"	374-8V	374-3S
2"	2 3/4"	374-9V	374-3S
2 1/2"	3 1/2"	374-10V	374-3S



471 BRACKET ELBOW

Sizes	Code galvanized	Code black
1/2"	471-4V	471-4S
3/4"	471-5V	471-5S
1"	471-6V	471-6S



529a SOCKET M/F ISO M4

Sizes	Code galvanized	Code black
3/8"	529-3V	529-3S
1/2"	529-4V	529-4S
3/4"	529-5V	529-5S
1"	529-6V	529-6S
1 1/4"	529-7V	529-7S
1 1/2"	529-8V	529-8S
2"	529-9V	529-9S



531 NIPPLES

Sizes	Code galvanized	Code black
1/2"	531-4V	531-4S
3/4"	531-5V	531-5S
1"	531-6V	531-6S
1 1/4"	531-7V	531-7S
2"	531-9V	531-9S



PLATINUM LINE

HOW MANY TYPES OF MALLEABLE CAST IRON DO EXIST?

Basically there are two groups of malleable cast iron: whiteheart and blackheart. Each of these type is subdivided into further several types indicating the hardness and ductility grade.

WHAT IS THE DIFFERENCE BETWEEN WHITEHEART AND BLACKHEART MALLEABLE CAST IRONS?

Whiteheart malleable cast iron: has a white casting and put through a heat-treatment in decarburising ambience for obtaining a partial or total decarburised material. The possible residual of graphite appears as carbon tempering.

Blackheart malleable cast iron: has a white casting and put through a heat-treatment not decarburising. The residual of graphite appears as carbon tempering concentrated on surface.

WHAT DOES IT MEAN TECHNICALLY?

Here a comparison among few different types of cast iron: by taking two cylinder samples of 12 mm diameter each, a test of Tensile Strength and Bending is carried for measuring the ductile-mechanical features:

EN-GJMW-400-5	whiteheart malleable cast iron
EN-GJMB-350-10	blackheart malleable cast iron
EN-GJMW-350-4	whiteheart malleable cast iron
EN-GJMW-550-4	whiteheart malleable cast iron
EN-GJMB-450-6	blackheart malleable cast iron
EN-GJMB-550-4	blackheart malleable cast iron

Parameter	EN-GJMW-350-4 whiteheart	EN-GJMW-400-5 whiteheart	EN-GJMW-550-4 whiteheart	EN-GJMB-350-10 blackheart	EN-GJMB-450-6 blackheart	EN-GJMB-550-4 blackheart
Tensile strength Rm [N/mm ²]	350	400	550	350	450	550
Elongation A in [%]	4	5	4	10	6	4
Yield strength Rp0.2 [N/mm ²]	160	220	340	200	270	340
Brinell hardness [HB]	Max. 230	Max. 220	Max. 250	Max. 150	150/200	180/230

PLATINUM LINE



WHAT STANDARDS ARE APPLICABLE?

The specific Standard for malleable cast iron and its classification is: DIN EN 1562, which describes the classification, types of cast iron and testing parameters.

AND WHAT ARE THE STANDARDS FOR THREADED FITTINGS?

The specific standard is DIN EN 10242, which classifies the different types of fittings by the material, the shape, the threads, the quality test, the tolerance, the thickness of zinc coating, the testing criterions under pressure, etc.

HOW ARE THE GEBO THREADED FITTINGS CLASSIFIED?

GEBO Fittings are classified in „design symbol A“.

WHAT DOES THAT MEAN?

The fittings included in this Class must have these features:

- Material type EN-GJMW-400-5 or EN-GJMB-350-10
- Taper external thread (ISO 7/1)
- Parallel internal thread (ISO 7/1)
- Average thickness of zinc coating not under 63 micron
- Must have specific dimensional features
- Must be tested SINGULARLY by immersion in liquid with a testing pressure of 5 bar
- Must be inspected SINGULARLY for eventual defects of shape
- Must pass up to 4“ a resistance test with pressure of min. 100 bar and for 5“ and 6“ min. 64 bar
- Must be produced by a Company Certified ISO 9001
- Other parameters

Fittings accordingly to DIN EN 10242; DVGW certified, Design Symbol “A”

FITTINGS ACCORDINGLY TO DIN EN 10242

